

# ML10/PL10 Series

DIY Smart Lock With Fingerprint Security  
Make your life easy and safe

ML10/PL10 series is a smart lock with embedded fingerprint recognition technology. It is DIY design, which can replace knob lock easily and quickly. You even can do it by yourself.



# Safe and Convenient

Forgot or lost your key?

In a hurry?

Can't remember your password?

Your finger is your key.



# Rugged, sleek and compact design

Zinc alloy metal casing

Decorated with acrylic panel or stainless steel panel



# Touch to Open

With infrared sensor detection, no need to press power button.



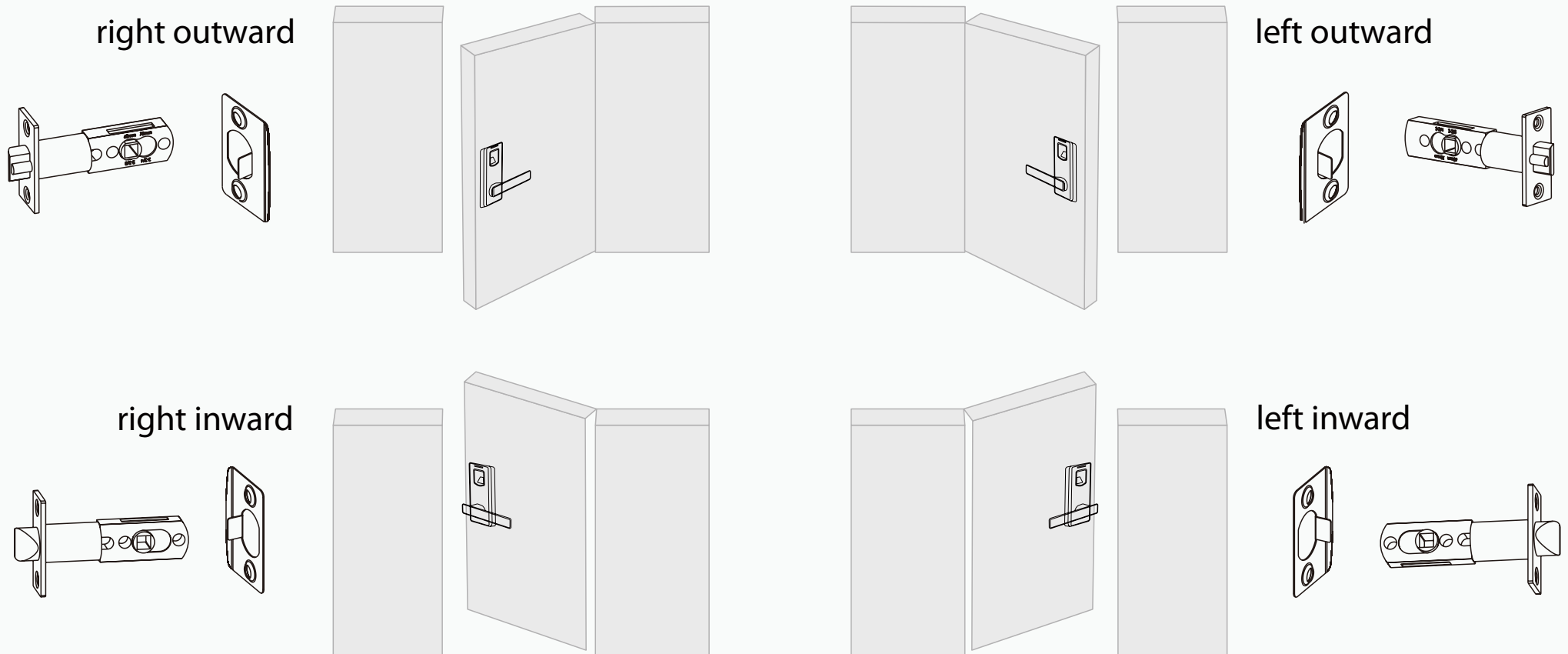
# Idle handle design

When the door is locked, the clutch is in idle position, the handle will be turned. However, the door will remain locked. This is crucial for the prevention of a forcible entry.



# Reversible design

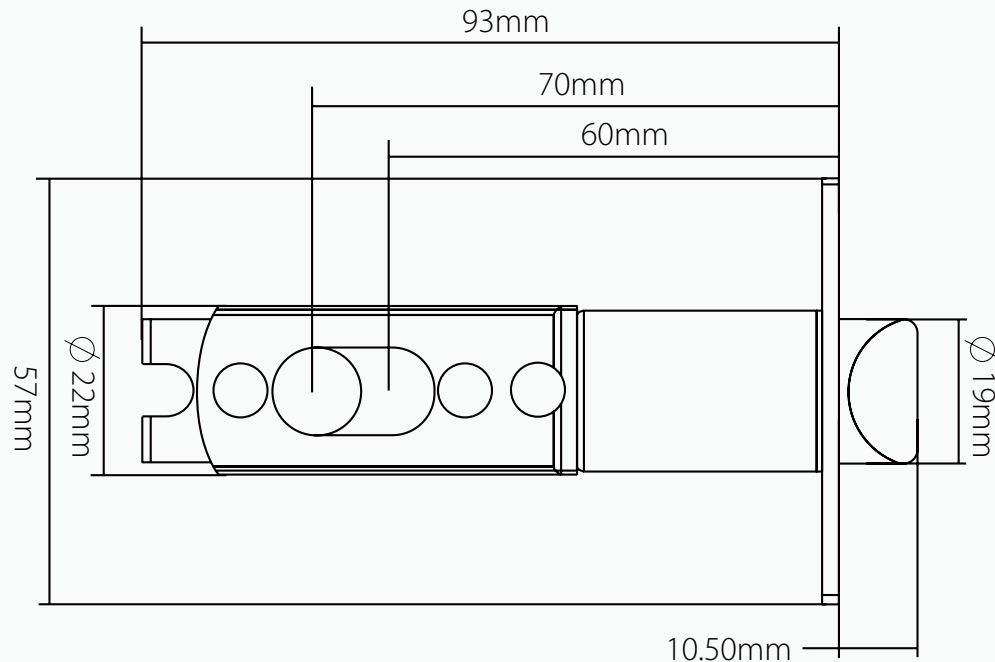
Handle and strike are reversible design, which fits all door open direction



# Optional lock body

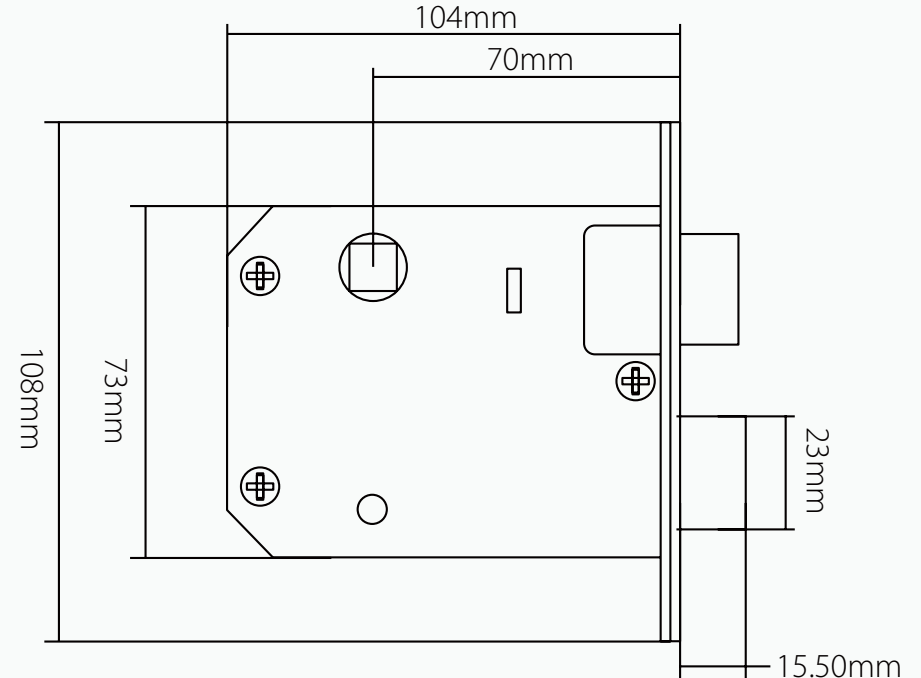
## American standard single latch

- Backset is adjustable (60mm or 70 mm)



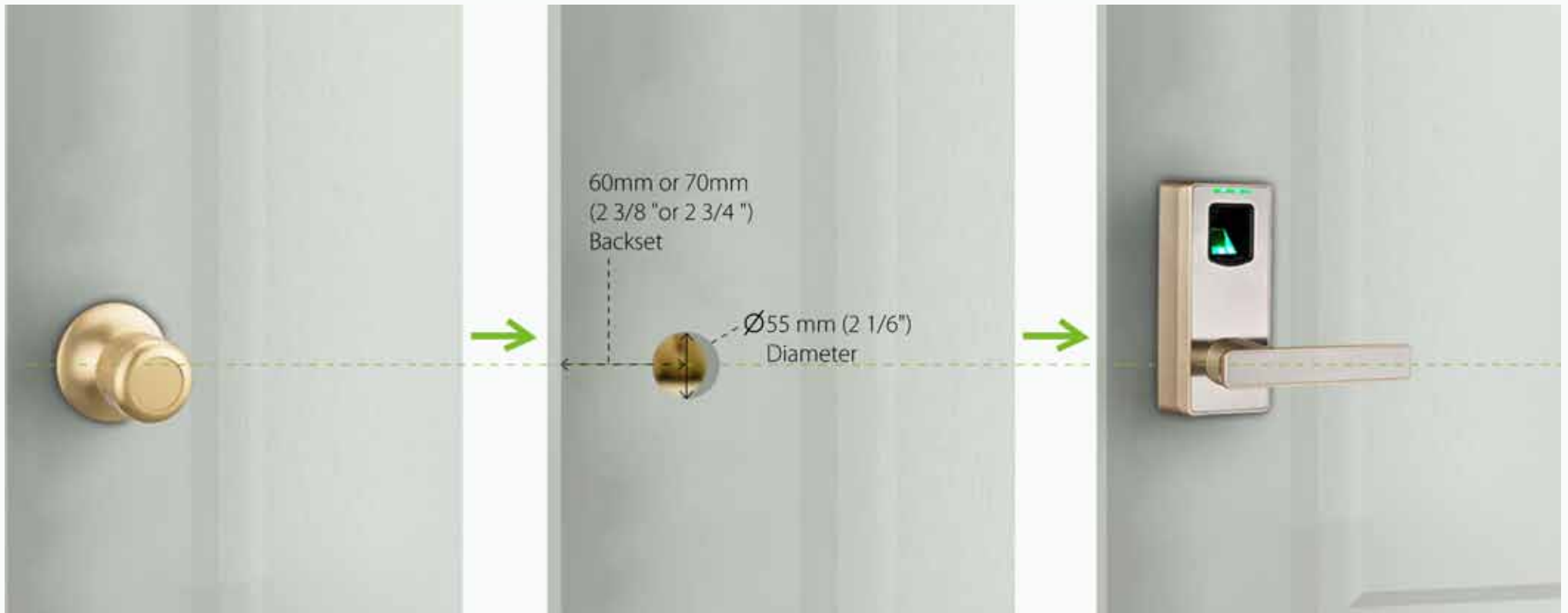
## German standard mortise with one latch and one deadbolt

- Turn handle upward to lock the deadbolt for more security



# Easy to replace

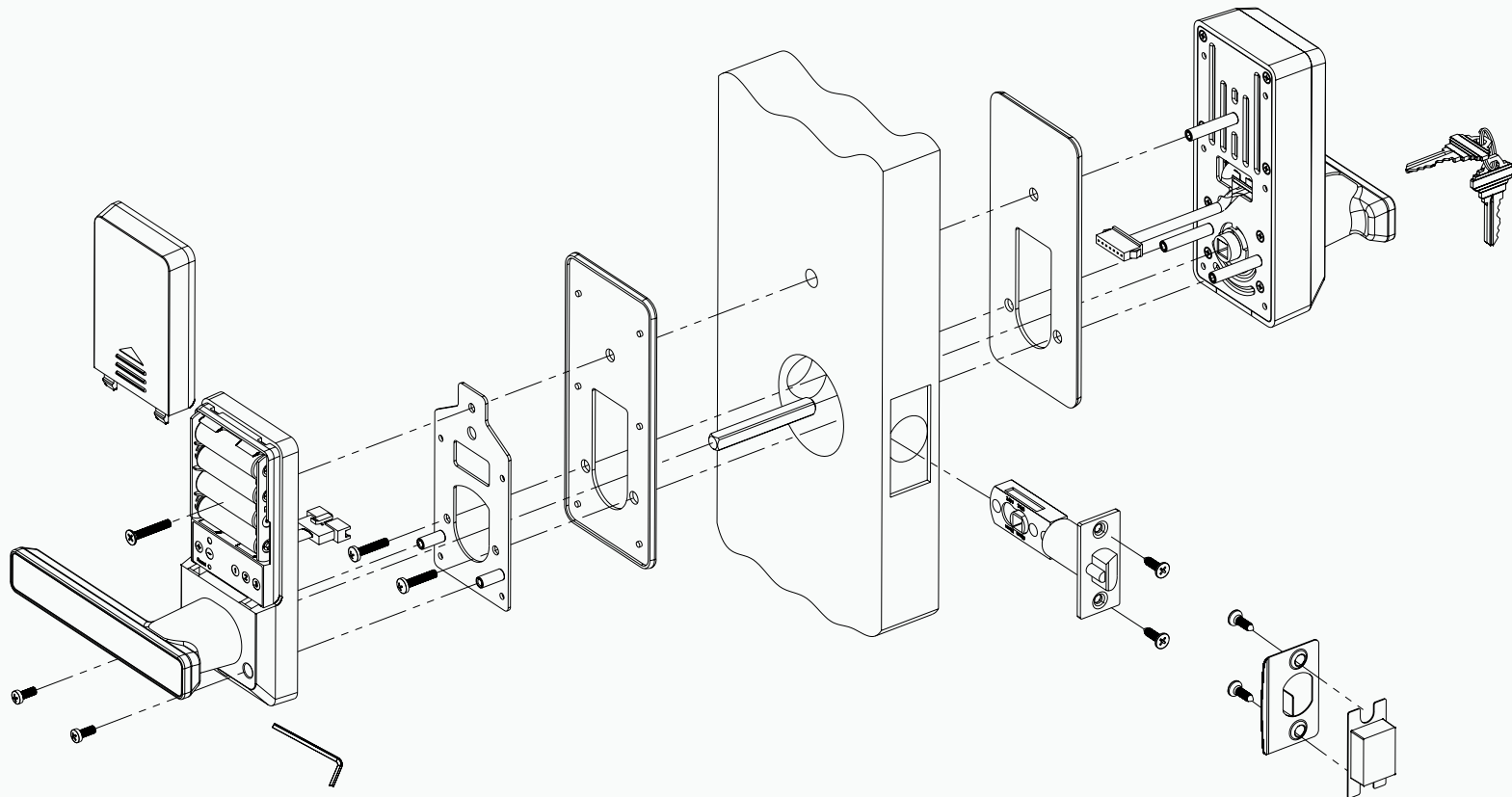
Backset is 60 mm (2 3/8 inch) or 70 mm (2 3/4 inch), which can replace knob lock perfectly. There is no risk to damage the door.





# Easy to install

Easy installation with just a screwdriver- no wiring required  
Installation steps are showed with pictures



# Easy to use

With Quick Start Guide stucked  
on the battery cover  
3 steps to register the first Admin  
Provide operation instruction  
video & user manual

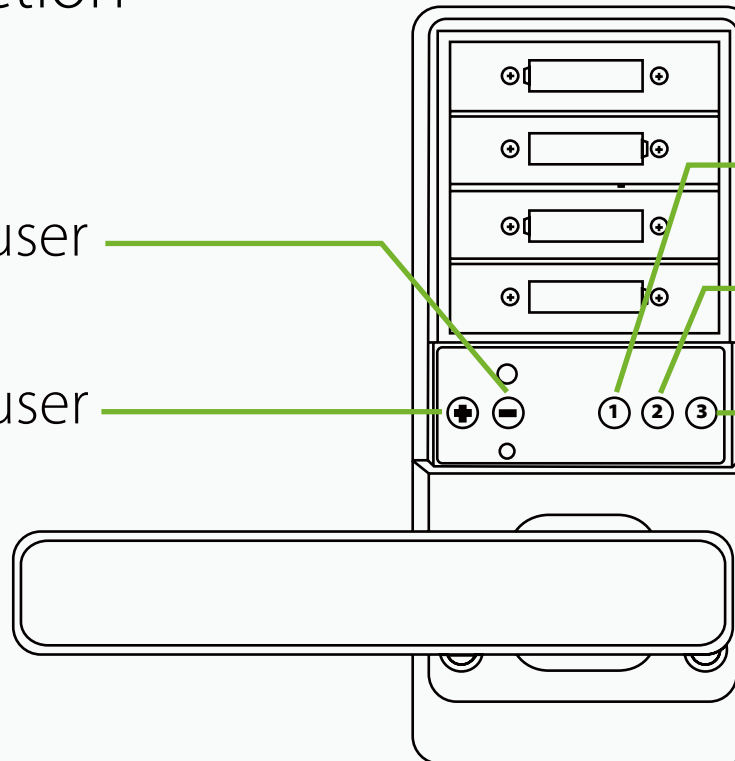
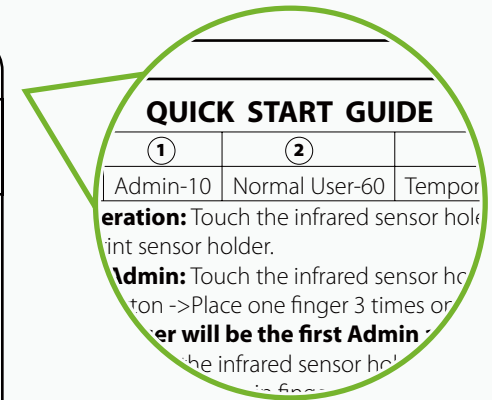
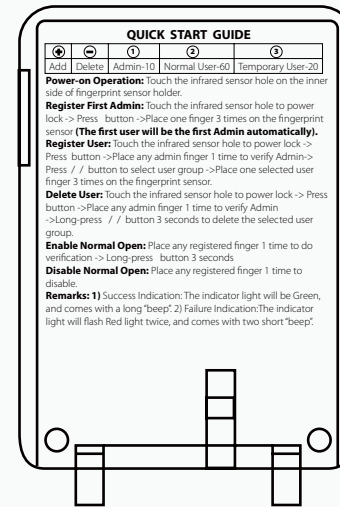
Delete user

Add user

Admin user

Normal User

Temporary User



# Quality is reliable

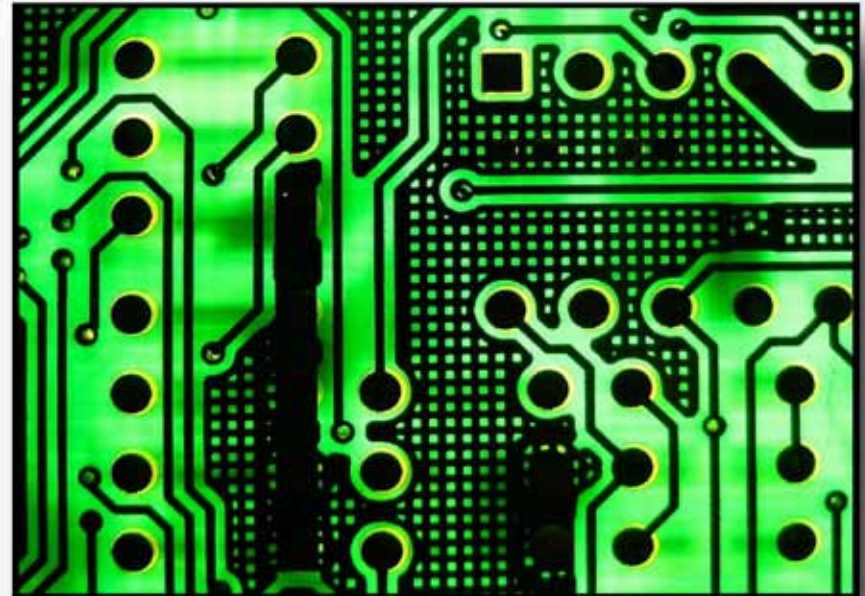
Keep testing clutch  
motor 60000 times

PCB surface with epoxy encapsulated  
is moisture-proof design

1 year warranty service



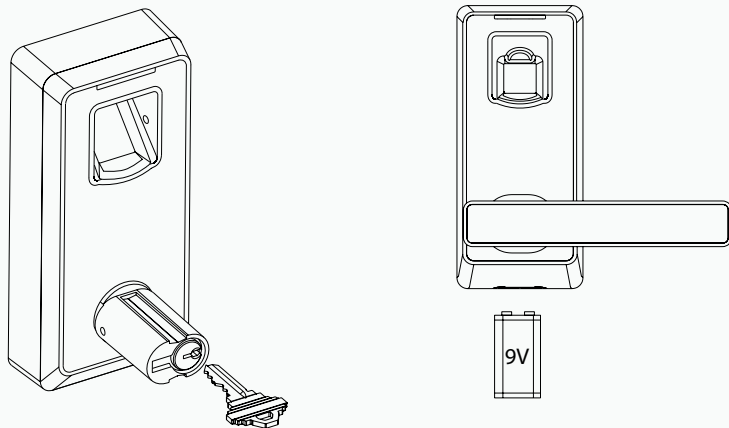
moisture-proof



## Low battery warning

If the lock is in low battery, LED and buzzer will make the indication. The door can be opened 100 times since you are notified of low battery. You have enough time to change the battery.

Mechanical key and 9V battery can be used for emergency unlocking if the batteries are completely died.



## Normal Open Mode

When you host a social event, it is inconvenient if people frequently enter and leave. In this case, you can set the lock to Normal Open mode, and no need to unlock. Just enjoy your party !



## PL10 / PL10D

If you need the same features with lower price

PL10/PL10D with rugged casing of *ABS material* is the best choice !





# Specifications

Model Name	ML10	PL10	ML10D	PL10D
Material	Zinc Alloy	ABS	Zinc Alloy	ABS
Lock Body	American standard single latch		German standard morise with one latch and one deadbolt	
Backset	60mm or 70mm(adjustable)		70mm	
User Capacity	Admin -10			
	Normal User - 60			
	Temporary User - 20			
Operating Temperature	0-45°C			
Power Supply	4 x AA Alkaline Battery(NOT supplied)			
Backup Unlocking Way	Mechanical Key & 9V Battery			
Dimensions	Front - 69(W)×155(L)×35(D) mm			
	Back - 69(W)×155(L)×25(D) mm			
Door Thickness	30-38 mm (optional)			
	39-46 mm (standard)			
	47-54 mm (standard)			
	55-60 mm (optional)			
Battery Life	Over 6000 times (approx1 year)			



ZK Building, Wuhe Road, Gangtou, Bantian, Buji Town, Longgang  
District, Shenzhen China 518129  
Tel:+86 755-89602345  
Fax:+86 755-89602394  
[www.zkteco.com](http://www.zkteco.com)

© Copyright 2014. ZKTeco Inc. ZKTeco Logo is a registered trademark of ZKTeco or a related company. All other product and company names mentioned are used for identification purposes only and may be the trademarks of their respective owners. All specifications are subject to change without notice. All rights reserved.